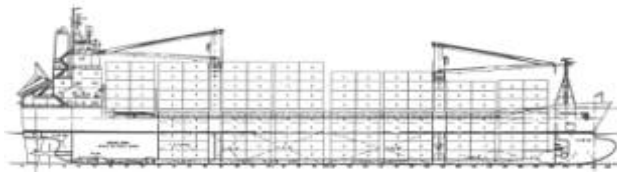


MV "KATRIN S"



Call Sign	V2A12	S H I P ' S P A R T I C U L A R S	Container intake:	
Flag	Antigua & Barbuda		20' container on deck	646
Port of Registry	ST. JOHN'S		20' container in holds	458
MMSI - No.	304 010 589		20' container in TOTAL	1104
IMO - No.	9 106 625		40' container on deck	313
Official - No.	2439		+ 20' container in deck	20
GL - Register - No.	90 398		40' container on holds	222
			+ 20' container in holds	14
			40' container in TOTAL	535
			+ 20' container	34
		Stackweights:		
		20' container in holds	120 mts	
		40' container in holds	150 mts	
		20' container on deck	45 mts	
		40' container on deck	65 mts	
Keel layed	19. Jun. 95		Bay 01 / 03 / 33 / 35 20' outer	14,4 mts
Delivered	25. Jun. 96		Bay 05 - 13 20' outer	43,0 mts
GT	11964		Bay 23 - 31 20' outer	42,5 mts
NT	4931		crossbays 09 / 27	39 / 42 mts
Panama GT			Cargo Holds Capacity	
Panama NT	10063,00		Hold # 1	5076,0 cbm
Panama Canal SIN	3002237		Hold # 2	12862,0 cbm
Suez Canal GT	12455,79		Hold # 3	3182,0 cbm
Suez Canal NT	9788,27		Total	21120,0 cbm
			Tank Capacities	
Length overall	149,60 m / 490,8 ft		HFO	1665,0 mts
Length between perpendiculars	139,78 m / 458,6 ft		MDO	112,0 mts
Breadth Moulded	23,10 m / 75,8 ft		Luboil	131,6 mts
Depth to Maindeck	12,80 m / 42,0 ft		Fresh- and Feedwater	165,8 mts
Summer deadweight	14454 mts		Ballastwater	4280,4 mts
Draft on Summer deadweight	8,60 m / 28,2 ft		Ship's Cranes	
design draft	7,40 m / 13,9 ft		2 electric / hydraulic cranes / Maker: NMF	
deadweight on design draft	11267 mts		max. lifting / outreach	45 mts / 25 m 40 mts / 28 m
freeboard to Maindeck	3,827 m / 12,6 ft		Main Engine	1 x 7L 50 MC
difference in freeboard	0,219 m / 0,7 ft		MCR	DMR-MAN-B&W 10010 KW
summer - winter				Germanischer Lloyd
light ship	5455 mts		Class Society:	GL + MCE, Aut
propeller	right handed, 5 blade fixed, dia: 5300 mm		Class Engine	GL + 100 A5, E
			Class Hull	Containership, SolasII-2, Re. 54
bowthruster	690 Kw, fixed pitch		HFO cons./day on design draft	abt 40 mts
trust	9,3 ts		max lifeboat intake	26 persons
service speed on design draft	abt. 18,5 knots		minimum safe - manning	13 persons
reefer plugs	150			
max fixed height keel -mast top	44,45 m / 137,7 ft			
Owners full style adress:	Reederei Rudolf Schepers GmbH & Co. KG			
	Hermann - Ehlers Str. 5 b			
	Tel.: +49 - 441 - 408 10-0			
	26160 Bad Zwischenahn/ Ofen			
	E-Mail: info@reederei-schepers.de			